

This Page Is Inserted by IFW Operations
and is not a part of the Official Record

BEST AVAILABLE IMAGES

Defective images within this document are accurate representations of the original documents submitted by the applicant.

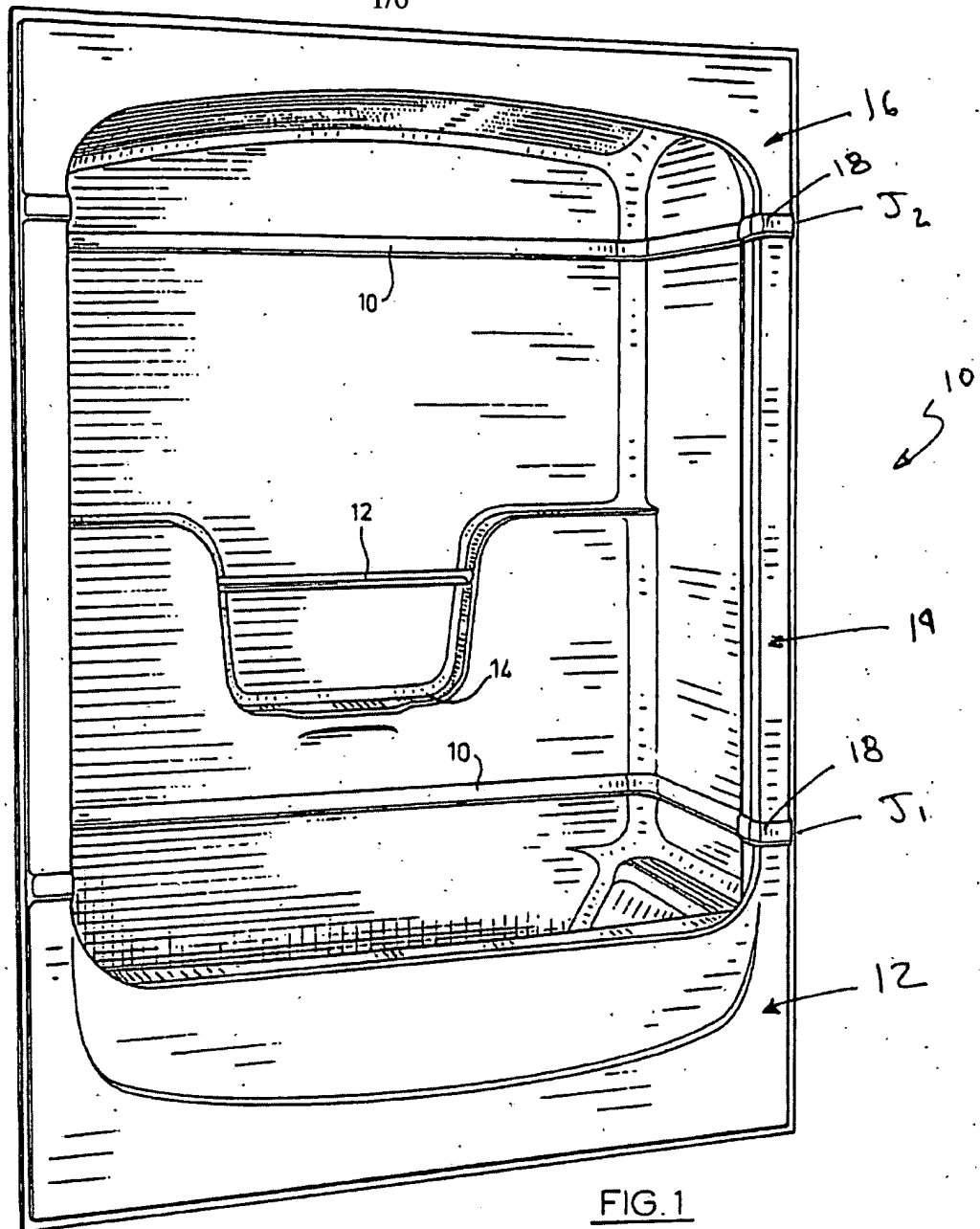
Defects in the images may include (but are not limited to):

- BLACK BORDERS
- TEXT CUT OFF AT TOP, BOTTOM OR SIDES
- FADED TEXT
- ILLEGIBLE TEXT
- SKEWED/SLANTED IMAGES
- COLORED PHOTOS
- BLACK OR VERY BLACK AND WHITE DARK PHOTOS
- GRAY SCALE DOCUMENTS

IMAGES ARE BEST AVAILABLE COPY.

**As rescanning documents *will not* correct images,
please do not report the images to the
Image Problem Mailbox.**

1/6



2/6

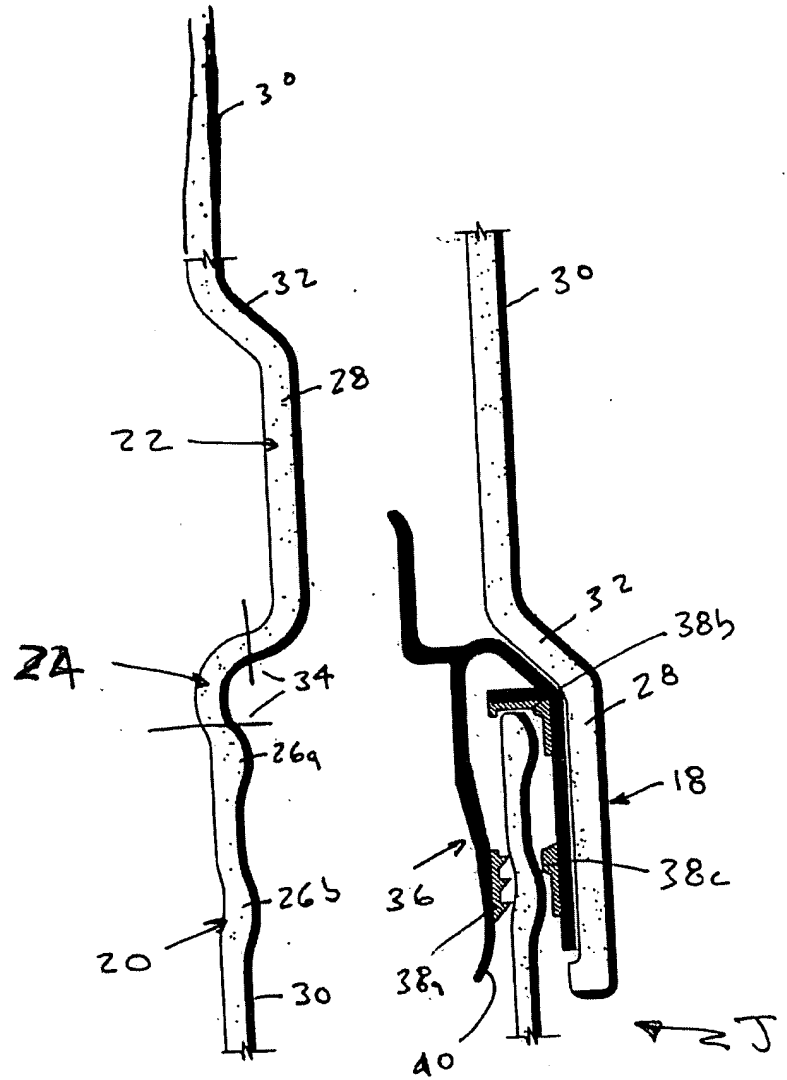


Fig 2A

Fig 2B

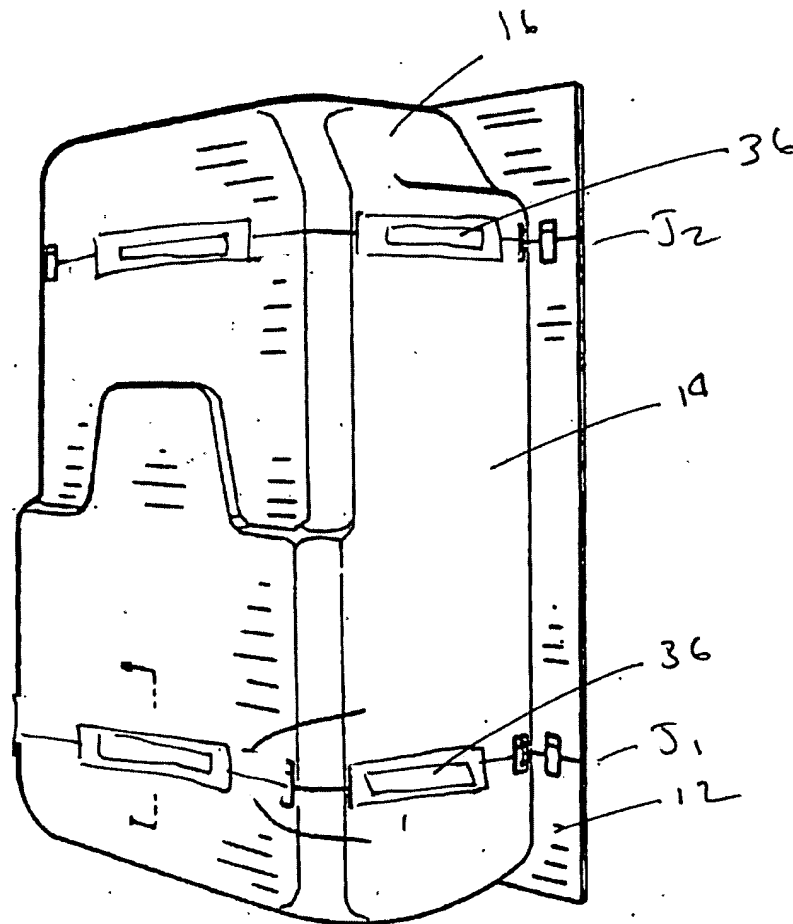
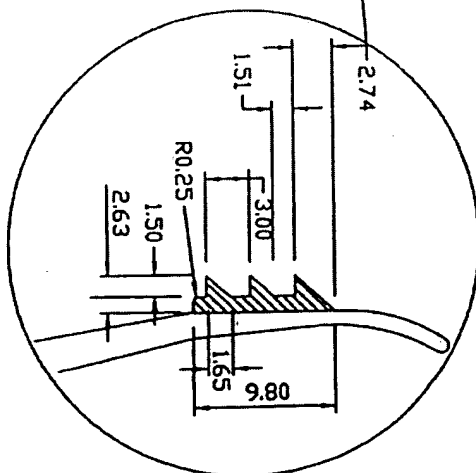
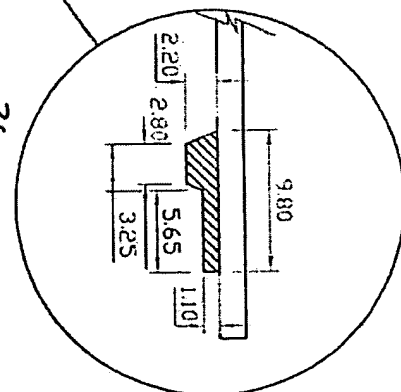
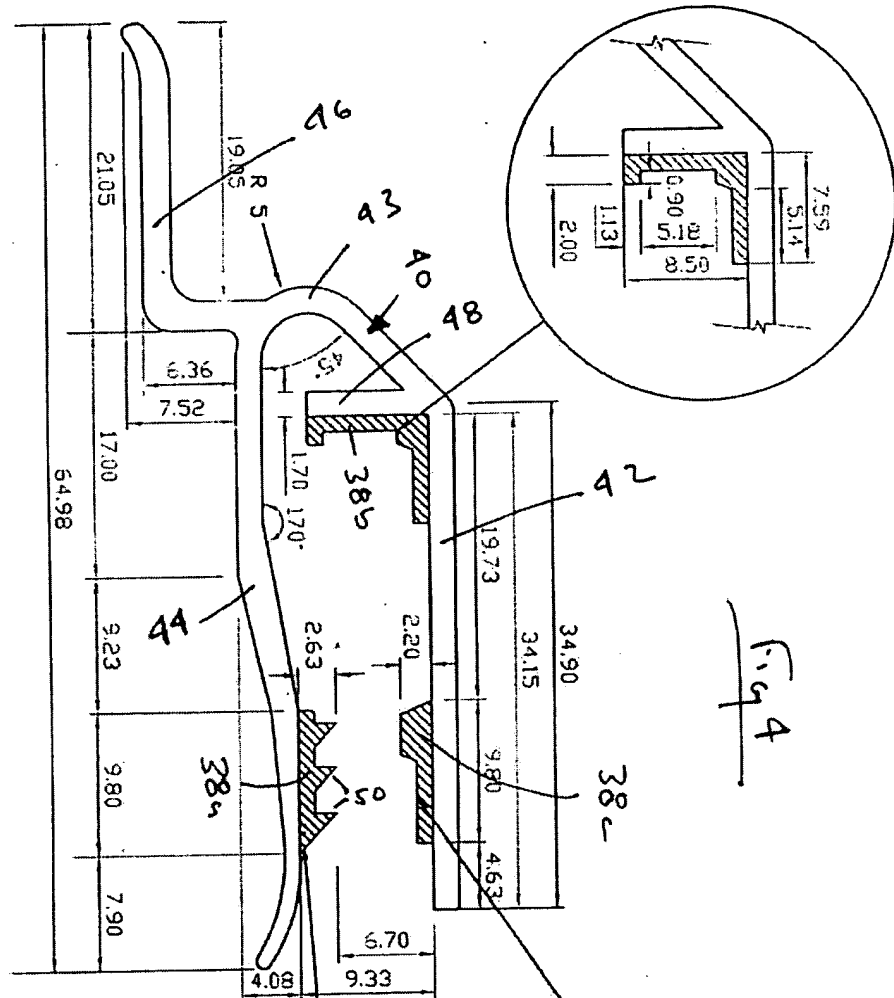
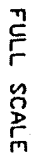



Fig 3

4/6



A	LEG EXTENSION AND ADDITION	DEC 29, 03
LETTER	REVISION	DATE

 Mirolin.	
DEPARTMENT ACRYLIC DEPARTMENT	REFERENCE 3-PIECE TUB/SHOWER SNAPFIT CONNECTOR
NAME PROPOSED SNAPFIT CONNECTOR FOR 3-PIECE TUB/SHOWER	
SCALE 2:1	DWGN C. S.
DATE DEC. 17, 2003	CHKD T. S.
	DWG. NO.

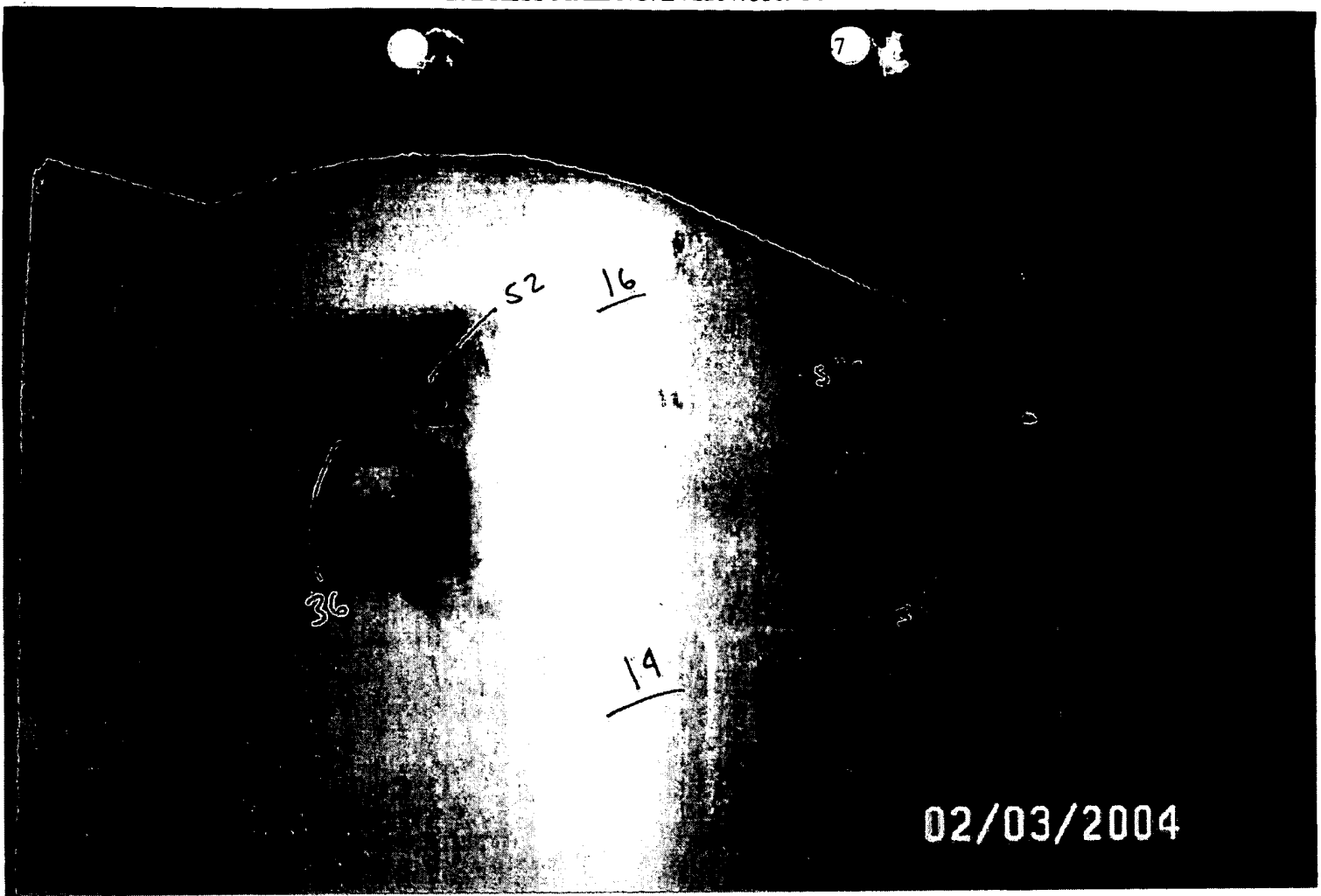
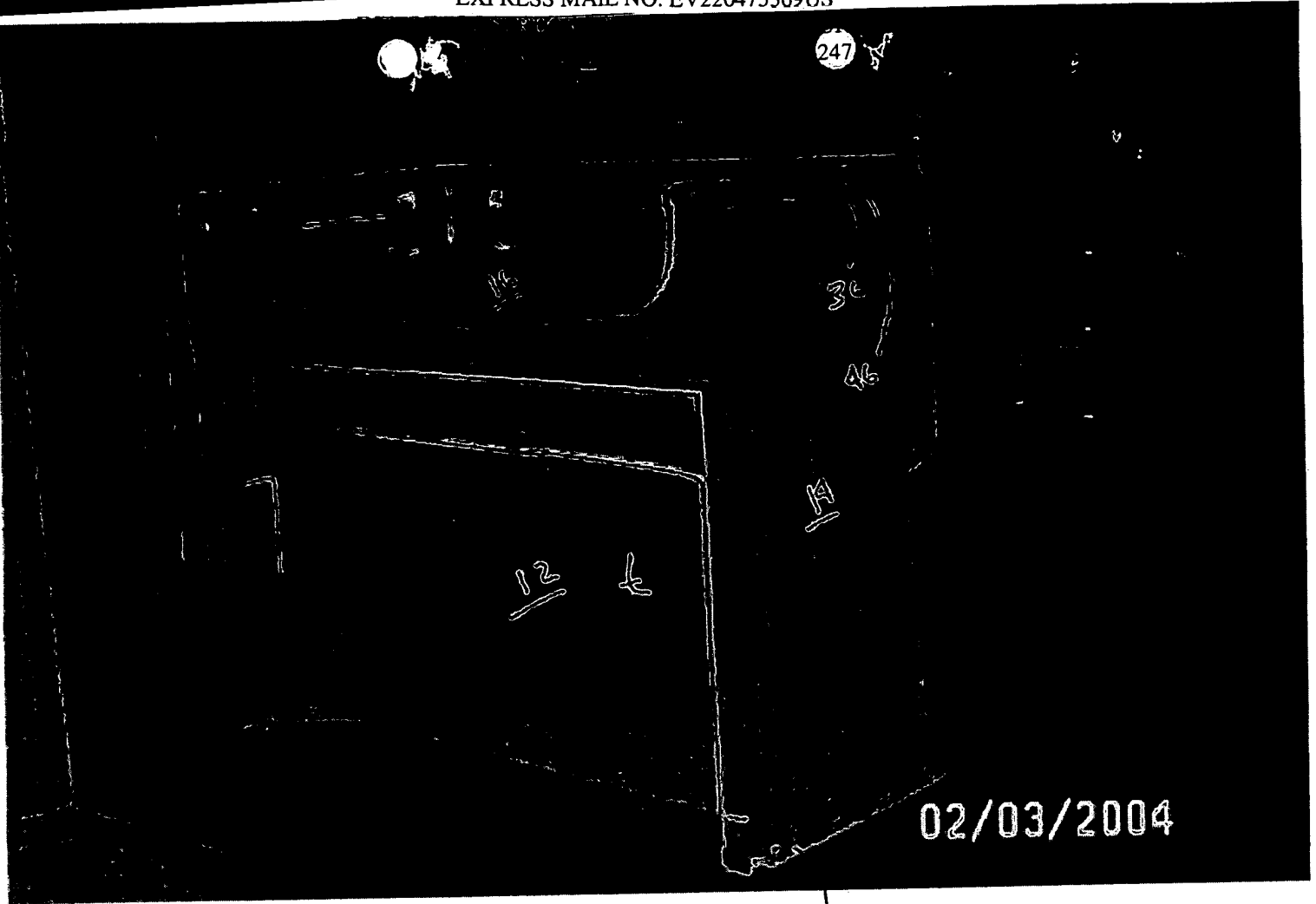


Fig 5

247



02/03/2004

Fig 6